

# NEWPORT

PARK



THE 1<sup>ST</sup>  
SMART APARTMENT

Developed with  
FULL JAPANESE Collaboration

JOIN THE CONTINUED SUCCESS WITH US

Contractor:  PT. KAJIMA INDONESIA



PT Diamont Development Indonesia

a subsidiary of  Mitsubishi Corporation



Architecture by **Mitsubishi Jisho Sekkei, Inc**  
 Interior Public Space by **George Kunihiro, T-Life Japan**  
 Landscape by **Salad Dressing**  
 Design Advisor of Masterplan Orange County  
 by **Kengo Kuma & Associates**



Lippo Mall Orange County



From left to right:  
 1. **Ryo Nagashima**, Construction Manager  
 2. **Taishi Amano**, Project Manager  
 3. **Asep Rahmat**, Project Manager

KAJIMA'S PROJECTS



Millenia Singapore



Resort World at Sentosa



Senayan Square



Marina Bay Financial Center

SMART APARTMENT FEATURES



ADVANCED RETINA ACCESS SECURITY SYSTEM

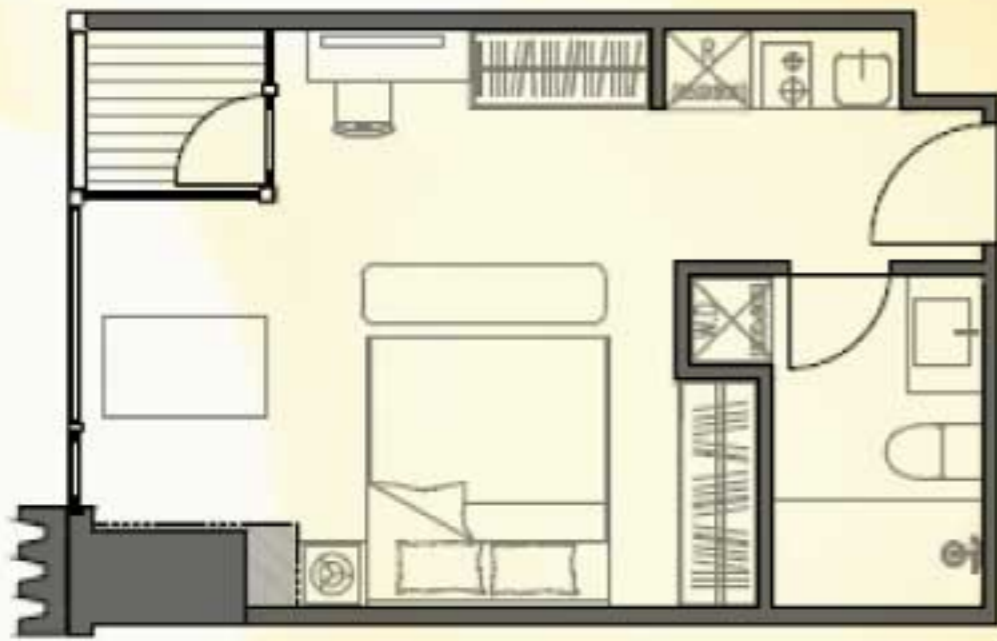


SMART DOOR LOCK



MOTION LIGHTING SENSOR

## 1 BEDROOM



### TYPE D2 DELUXE

SGA 34.68 M<sup>2</sup>

- 1 BEDROOM
- PANTRY
- 1 BATHROOM
- BALCONY

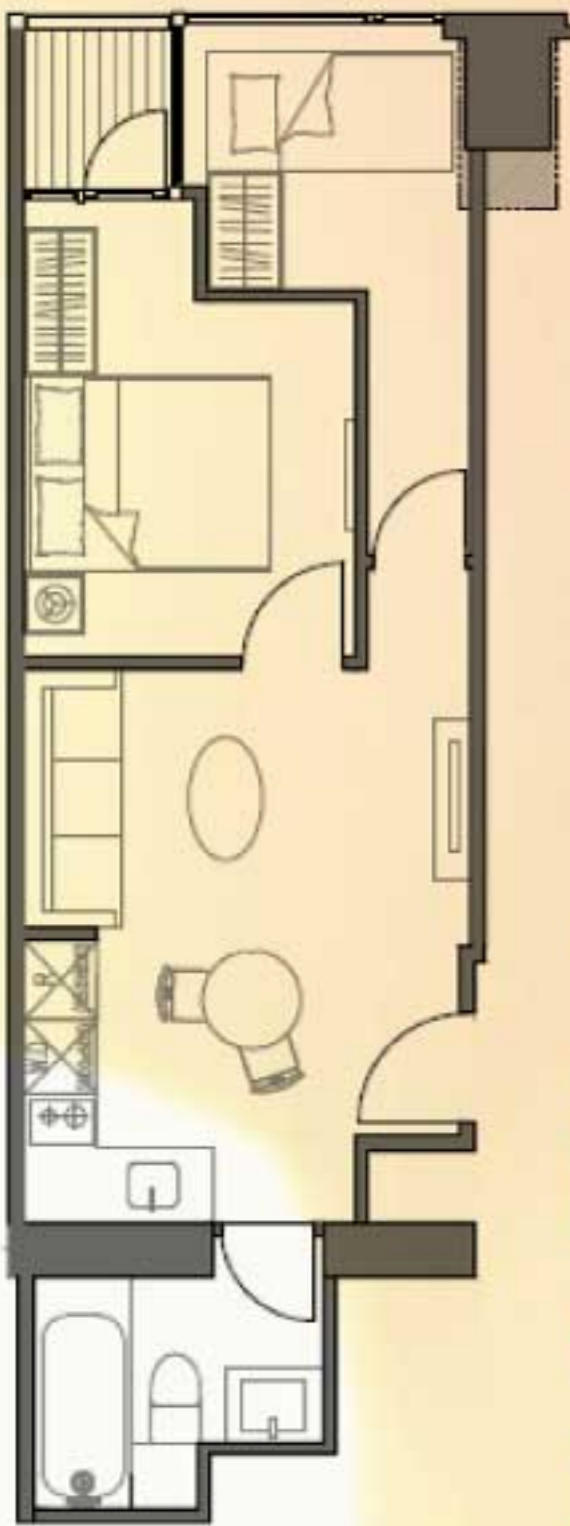


### TYPE D7 DELUXE

SGA 25.76 M<sup>2</sup>

- 1 BEDROOM
- PANTRY
- 1 BATHROOM
- BALCONY

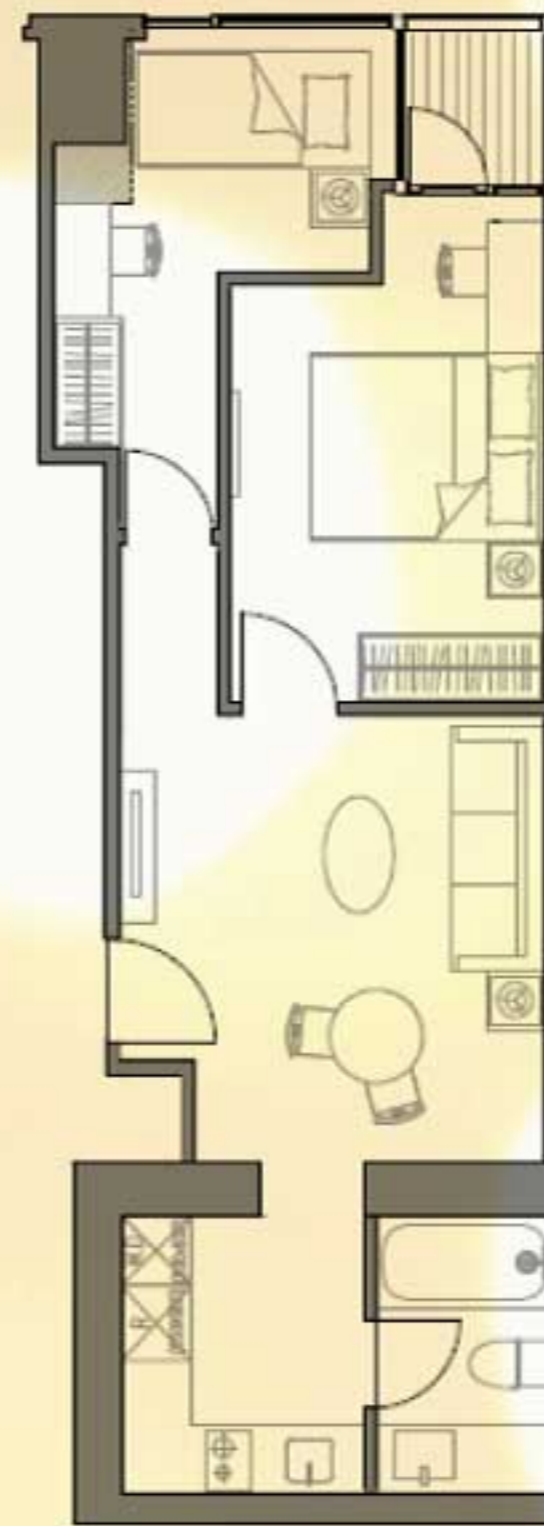
## 2 BEDROOMS



### TYPE B7 DELUXE

SGA 48.37 M<sup>2</sup>

- 2 BEDROOMS
- PANTRY
- 1 BATHROOM
- BALCONY
- LIVING ROOM



### TYPE B6 DELUXE

SGA: 56.31 M<sup>2</sup>

- 2 BEDROOMS
- LIVING ROOM
- 1 BATHROOM
- PANTRY
- DINING ROOM
- BALCONY



**SHOW UNIT READY AT MAXXBOX LIPPO CIKARANG**  
 JL. OC Boulevard Utara Orange County, Bekasi 17550, Indonesia

# 6

## NEW INFRASTRUCTURES



PATIMBAN DEEP SEAPORT



KERTAJATI INTERNATIONAL AIRPORT  
(Second largest airport in Indonesia)



HIGH-SPEED TRAIN  
JAKARTA-BANDUNG



LRT CAWANG - BEKASI TIMUR  
- CIKARANG STATION



MONORAIL / APM CONNECTING TO 7  
SURROUNDING INDUSTRIAL ESTATES



JAKARTA - CIKAMPEK  
ELEVATED TOLL

NEWPORT  
PARK

ALMOST  
SOLD OUT

GLENDALE  
PARK

SOLD  
OUT

BURBANK  
SUITES

SOLD  
OUT

PASADENA  
SUITES

SOLD  
OUT

WESTWOOD  
SUITES

SOLD  
OUT

IRVINE  
SUITES

SOLD  
OUT

## AWARDS



*The Best Innovation In*  
**PROPERTY  
PRODUCT CONCEPT**  
*Property Innovation Award 2017*

*The Best Innovation In*  
**SMART LIVING HOME**  
*Property Innovation Award 2017*



# ORANGE COUNTY

[www.orangecounty.co.id](http://www.orangecounty.co.id)

**DISCLAIMER:** While every reasonable care has been taken during the preparation of this brochure, the developer and its agents make no warranty, representation or undertaking whether express or implied, nor assume any legal liability, whether direct or indirect, nor take responsibility for the accuracy, completeness, or usefulness of any information contained herein, and may not be held responsible for any inaccuracy. The reader will release all liabilities on the developer, agents, and all other third parties related to any information contained herein. All information and specification are current at the time of print, may be changed by the developer and/or its agents without prior notice as may be required, and shall not form parts of an offer or contract. All plans are subject to any amendment approved by the relevant authority or other related parties. Rendering and illustrations are artist impressions only and cannot be regarded as representations of fact. All figures are not to scale, approximate, and will be subject to other conditions. Size and dimension are approximate measurements using equipment, criteria, and method determined by the developer. The developer has the absolute right to determine the schedule, phases, design of the project. Any information contained herein and the suggested recommendation of any subject by the developer, its agents, and/or third parties may be incorrect and inaccurate and it is only a reference that is subject to further research and verification by the reader. This is not an offer to sell, nor solicitation or offers to buy office units. All office units are calculated on a semi-gross basis by the developer. Please invest carefully. Future results are not guaranteed. Other conditions apply. The reader should make its own enquiries to verify the information contained therein. Please always seek for up-to-date information. All the contents may not be reproduced nor copied directly or indirectly without the written consent of the developer. Copyright and all rights reserved.